

Short instruction HV(-S)15 - HV(-S) 50



Start heating: (For more detailed information read the operating and installation manual)

The logs should be about 50cm long (30cm for the HV 15 and HV 17) with a maximum diameter of 20 cm. They have to be split at least once. Make sure the split logs are packed close together leaving no hollow space. Otherwise there's danger of cavity burning and the wood gasification boiler can't reach it's full efficiency. Clean the burner, ash-tray and/or other parts if necessary.

HV: Use pieces of newspaper or firestarter cubes and very dry kindling wood to light a fire above the turbodisk. Then slowly put on more and more small bits of wood.

Close the feeder hatch of the boiler, but leave the ash door and the bypass flap open. Let the fire burn, adding small pieces of wood occasionally. For electric start please close all doors and follow the instructions in the manual.

If the firebed is thick enough after about 10 to 15 minutes, spread it out carefully and put on small pieces of fire wood. Now shut the feeder hatch, the ash-door and the bypass flap and push the START button at the control panel.

If, after about 15 more minutes, a sufficient basic firebed has built up, put on some small pieces of fire wood first and then fill the combustion chamber with split logs as needed.

HV-S: Fill the boiler up to a third with very dry kindling wood. Make sure, the wood doesn't lie too close together. Put paper, cardboard or firing cubes on top of the wood and set fire to it.

Turn on the exhaust gas ventilator by pushing the „Start“ button on the control panel now and close the feeder hatch, the ash door and the bypass flap. To support the heating up, the feeder hatch may stay open for a short time with the safety hook hitched to the boiler.

If, after 20 or 30 minutes, the boiler has reached it's operating temperature, you can fill it with split logs as needed.

Attention: Do not open the ash door while the boiler is in operation!

Cleaning: (For more detailed information read the operating and installation manual)

Daily

- Remove the ash from the combustion chamber [1], leaving a layer fingerthick inside
- Empty the ash tray [2]

Weekly

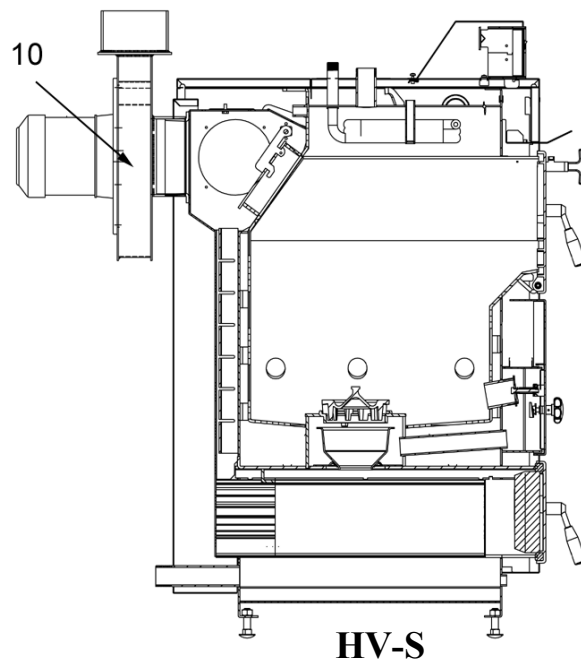
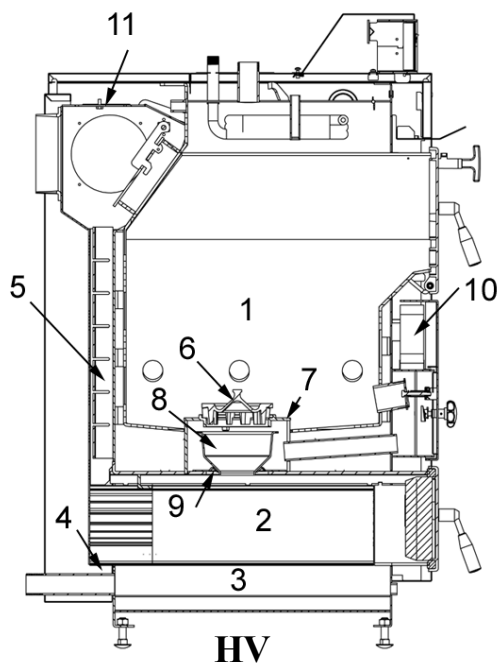
- Clean the bars [3] under the ash-tray [2]
- Clean the bars under the ash-tray at the very back [4] up to the beginning of the riser duct [5]

Monthly

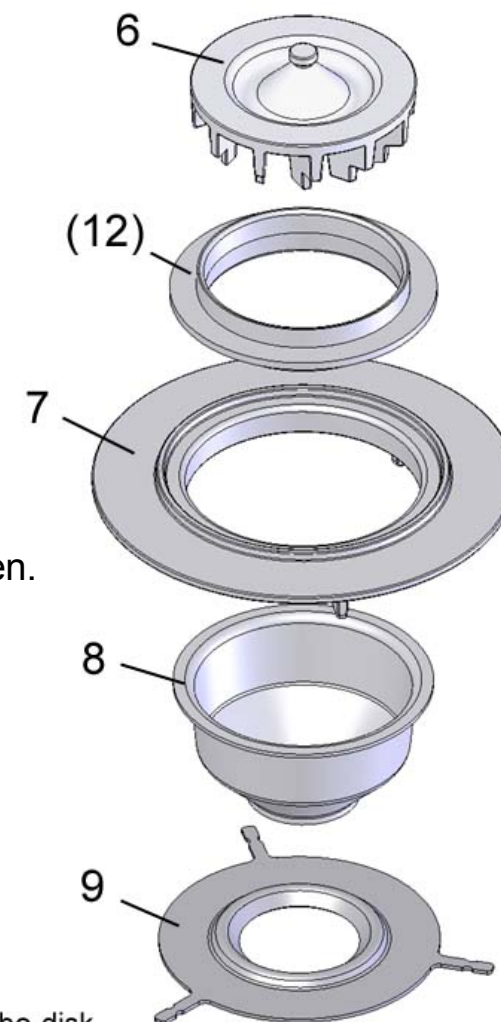
- Take out the turbo-disk [6], the burner ring [7 and 12], pot burner [8] and the lower shroud ring [9] and remove the ash from the interspace [9].

Additionally

- Clean the ventilator [10] at least twice a year. If noises or lessening of power occur, more often. To avoid bearing damage don't use compressed air.
- Clean the riser duct [5] through the cleaning lit [11] at least twice a year



KUNZEL



- 6 Turbo-disk
- 12 Burner ring (HV 30 only)
- 7 Upper burner ring
- 8 Pot burner
- 9 Lower shroud ring (camber up!)

Burner assembly HV und HV-S